

## AT Series Firmware Upgrades

The firmware of the AT controls how tests are carried out, which tests are available and how the interfaces (including the front panel) function. New versions of the firmware are made available periodically and electronic copies are available free of charge. To maximize the performance and longevity of your ATi, you should install these upgrades as they become available. Contact your local supplier or see the Voltech web site at [www.voltech.com](http://www.voltech.com) for details.

### Upgrade Firmware.

ATI.ABS or AT36.ABS

Upgrade firmware is available at the Voltech website or from your supplier free of charge.

### Custom Firmware.

If you have purchased new tests, you will be supplied with a file called either ATixxxx.ABS (for an ATi) or AT36xxx.ABS (for an AT3600) that contains the tests you have requested as well as the latest version of firmware. These files are customized for serial number of the tester given at the time of purchase. The xxx in the custom firmware filename will be the last four digits of the AT's serial number.

### Boot Code.

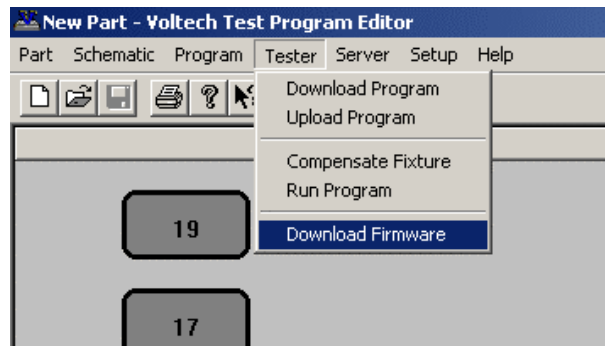
BOOTATI.ABS or BOOTAT36.ABS

If you have been supplied with these files via email, on disk or if they are published on the website then the boot code of your AT should be upgraded at the same time the firmware is upgraded.

### Upgrade Procedure

1. Always download and install the latest version of the Voltech PC Editor from the Voltech website first.
2. Connect the AT to the PC for use with the Editor as normal. (Auxiliary port on the AT to a PC COM port). Switch on the AT.
3. Save the .ABS file(s) to a local or network directory of the PC. The default Editor directory is:  
**C:\Program Files\Voltech Instruments\Voltech AT Editor\**  
If you have boot code, it MUST be in the same directory as the other .ABS file.
4. Using the Editor, select

Tester > Download Firmware

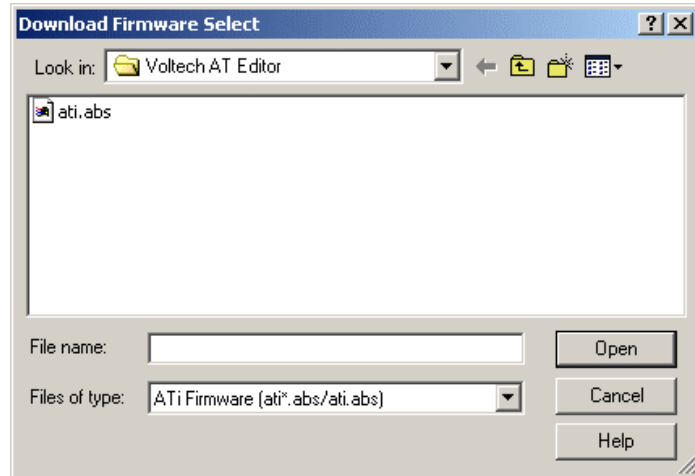


Locate the .ABS file, select it and click on 'Open'.

The firmware upgrade will now commence, and the editor screen will show a series of dialogue boxes to identify each stage in the process. The download should take approximately 30 minutes.

Note that even if you have a boot code abs file in this directory it will not show in this dialogue. The firmware is always upgraded first.

In the unlikely event that the editor display shows an 'ERROR' dialogue box before the download is complete, then try repeating the entire procedure. Should the error persist then contact your Voltech distributor.



5. At the end of the download, the tester will reset itself. You may then carry on using your tester as normal, with the benefits offered by the new firmware being available immediately.
6. If you were supplied with boot code (BOOTAT36.ABS or BOOTATI.ABS) file, the Editor will now check the boot code version already inside the AT. If the boot code requires upgrading, the Editor will prompt you with a warning that communications must not be disrupted during the time that it takes to upgrade the boot code. This time can be up to 12 minutes on an ATi.



**WARNING:** You must NOT switch off the AT or interrupt the communications during the 12 minutes required for this part of the upgrade.

If the power is removed from the ATi or the communications disrupted in any way during this process the ATi may be rendered inoperable and require service at a service center.

For optimum performance and reliability always upgrade the boot code when prompted. If there is a risk that power or communications may be disrupted you may choose not to upgrade the boot code at this time, but you should do so at the earliest opportunity. The ATi will continue to function without new boot code.

7. To ensure compatibility, you should also install the latest version of the Voltech PC Server.

Please do not hesitate to contact either Voltech or your local supplier if you have any questions regarding this procedure.

**Voltech Instruments Inc.**  
 11637 Kelly Road, Suite 306  
 Fort Myers, FL 33908  
 USA  
 Tel: +1 239 437 0494  
 Fax: +1 239 437 3841  
 sales@voltech.com

**Voltech**<sup>™</sup>  
 www.voltech.com

**Voltech Instruments Ltd.**  
 148 Sixth Street  
 Harwell International Business Centre  
 Didcot, Oxon OX11 0RA, UK  
 Tel. +44 1235 834555  
 Fax. +44 1235 835016  
 sales@voltech.co.uk

Voltech is committed to a policy of continuous product development that may alter product specifications without notice.